

Surveys & POA's



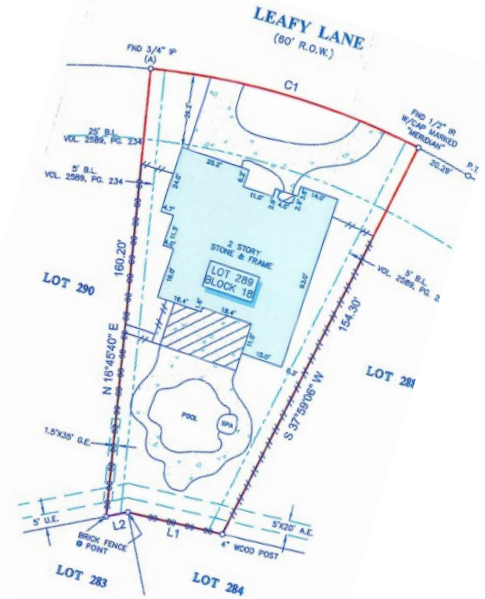
What you need to know about them...

In order for a survey to be acceptable, it must have the following:

- Compass
- Legend
- Signature
- Stamp
- Certification
- Field notes must be attached, if referenced.

Concerns that will need to be addressed:

- Any additions that are not on survey
- Generally survey's over 10 years old
- Survey's missing any of the above referenced information.



Power of Attorney



In order for a Power of Attorney to be acceptable the following are required:

- Must be property specific
- Include legal description
- Signed and notarized
- Must be approved by lender
- We must have the original at closing
- Alive and Well call is **REQUIRED** on the day funding

A phone call will be required anytime on the day of funding, the file will not be disbursed until we have spoken with the person granting the Power of Attorney.

Serving Bell, Coryell and Williamson counties

HARKER HEIGHTS

661B W Centex Expwy
Harker Heights, TX 76548
254.699.1102
254.699.3171 Fax

TEMPLE

4613 S. 31st St.
Temple, TX 76502
254.773.7750
254.778.2533 Fax

GATESVILLE

109 South 7th St
Gatesville, TX 76528
254.865.2114
254.865.5274 Fax

SALADO

40 N. Main St.
Salado, TX 76571
254.947.8480
254.947.9480 Fax